

West Coast Championships '08

Incorporating WIORA & NORA

Hosted by **Clifden Boat Club** 18th – 21st June 2008

SAILING INSTRUCTIONS

If there is any conflict of rules, between these sailing instructions and the "Notice of Race", the sailing instructions rule will apply.

1. ORGANISING AUTHORITY

1.1 The organising authorities for the West Coast Championships 2008 are the West of Ireland Offshore Racing Association, North-west Offshore Racing Association and Clifden Boat Club.

1.2 The West Coast Championships 2008 will be run from Wednesday 18th June to Saturday 21st June 2008 inclusive.

1.3 Participants shall become honorary members of Clifden Boat Club for the duration of the event.

2. RULES AND HANDICAP SYSTEMS

2.1 The Championships will be governed by the Racing Rules of Sailing (RRS) of the International Sailing Federation (ISAF), the prescriptions of the Irish Sailing Association (ISA), the IR2000 (IRC) rating rule, the ECHO ISA Performance Handicap System, the ISAF / ORC Safety Regulations Category 4, Class Association Rules where applicable, the Notice of Race and these Sailing Instructions and any amendments thereto. Sports boats & One-Designs shall comply with the ISAF Special Regulations Governing Offshore Racing for Category 5 races.

2.2 Competitors shall comply with the ISAF Advertising code Category C. The Organizing Committee reserves the right to refuse entry to the Championships if in its opinion there is a conflict between a competitor's sponsor and the event sponsors.

2.3 The progressive handicapping system will be used for ECHO with handicaps being adjusted as indicated by the Sail 100 race results program after each race. The act of handicap adjustment or failure to adjust will not be grounds for protest.

2.4 Revised ECHO handicaps will be shown on the results sheet

2.5 COMPETITORS MUST PRODUCE A VALID COPY OF THEIR IRC and/or ECHO CERTIFICATES ON OR BEFORE REGISTRATION.

2.6 All yachts competing in ECHO shall start with TCF s calculated by the WIORA ECHO sub committee.

2.7 Crew Limitation in, Class 1 and Class 2 shall be as per IRC Certificate plus 1.

2.8 Crew Limitation in Class 3 shall be as per IRC Certificate.

2.9 3 races completed will constitute a series.

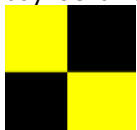
3. ELIGIBILITY AND ENTRY

3.1 The event is open to all sailing cruisers, cruiser racers and sports / Day boats. Where there are three or more sports / Day boats they may have their own class or sail as a class within class that suits their rating.

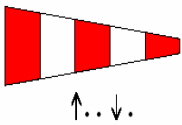
4. SIGNALS MADE ASHORE AND NOTICE TO COMPETITORS

When the following International Code Flags [ICF] are displayed from the Club flagpole they mean: -

4.1 ICF 'L' indicates that an amendment to the Sailing Instructions and/or a notice to competitors has been posted on the Official Notice Board (which is situated in the Clifden Boat Club). Any such notice will be posted before 10.00 hrs on the day it shall take effect.



4.2 ICF 'AP' - Today's race is postponed. Do not leave the harbour area. The warning signal will not be made less than 90 minutes after the lowering of this signal.



5. CLASSES, CLASS FLAGS AND SAIL NUMBERS

5.1 Class divisions will be based on standard echo handicaps.

5.2 The Organizing Committee may, in their absolute discretion, assign a boat to any class.

5.3 Boats shall show their correct sail numbers. Permission to sail under any other sail number must be sought in writing from the Race Office before going afloat.

5.4 All boats shall wear their appropriate numeral pennants while racing:

CLASS	NUMERAL PENNANT
Class 1	1
Class 2	2
Class 3	3
White Sails	4
Sports Boats	ICF "J"

6. SCHEDULE OF RACES

It is intended to hold six races, if possible.

The schedule may be as follows:

- 18th One races
- 19th Two races
- 20th Coastal Race
- 21st Two Race

This schedule may be revised during the West Coast Championships.

After finishing each race boats should return to the start area as soon as possible.

Boats NOT NEXT TO START should avoid the immediate start area and await their class start.

RACE	Warning Signal	Starting Signal
First day	11.55	12.00
Remaining days of event	10.55	11.00
Subsequent Races	As soon as possible after the last boat IN CLASS has finished the previous race	

7. ORDER OF STARTS

7.1 Skippers Briefing will be on Wednesday morning at 09:30 hrs. Committee boat will depart for sailing area at 10:00 hrs. Prep the sailing course at 11:00 hrs. First start at 12:00 hrs.

7.2 Class 1 will be the first class to start the first race each day followed by Class 2 followed by Class 3 followed by White Sails Class.

7.3 For the second or subsequent races the start order will be at the discretion of the Race Officer and will be signalled by the appropriate class flag.

7.4 In the event of a general recall subsequent starts will be postponed.

8. MARKS AND COURSES

ALL COURSES AT THE DISCRETION OF THE RACE OFFICER.

8.1 Courses may be LAID – OLYMPIC TYPE - Triangle, Windward/Leeward or Combination of Both.

8.2 Courses may be Round the CANS or COASTAL

8.3 The COURSE TYPE will be indicated by a BLACK/WHITE BOARD on the committee boat and may be announced on VHF CH. 14.

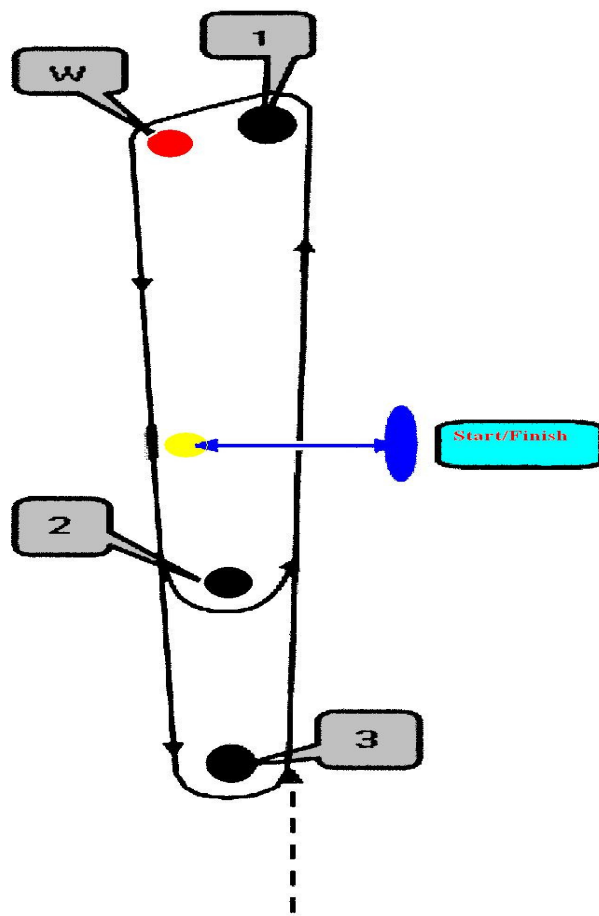
8.4 For laid courses MARKS will be YELLOW, or ORANGE inflatable buoys.

For Round the Cans, the marks used may be a combination of navigation marks, CBC racing marks and inflatable buoys.

8.5 The marks for Round the Cans course will be displayed on a black/whiteboard on the committee boat and announced on VHF channel 14.

8.6 Coastal Races may use a combination of Islands, CBC marks and Inflatable buoys.

L A I D C O U R S E D I A G R A M



9. STARTING LINE

9.1 The approximate area of the starting line may be announced each morning prior to racing on CH 14 and may also be displayed on the club notice board in the club house or race office.

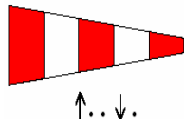
9.2 The starting line shall be between a red and white pole on the committee boat and a buoy at the port end of the line or an adjacent mark.

9.3 The committee boat is a mark of the course at the start [and finish] of the race and when anchored.

9.4 A buoy may be laid off the stern of the committee boat; no boat shall pass between this buoy and the committee boat at any time.

10. RACE SIGNALS

10.1 POSTPONEMENT RRS 27.3 - Races not started are POSTPONED. The warning signal may be made 1 minute after removal unless at that time the race is again postponed or abandoned.



10.2 STARTING SIGNALS RRS 26 - Starting signals will be in accordance with RRS Rule 26 as follows:

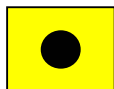
WARNING SIGNAL: 5 minutes before the start the class flag will be broken out and a sound signal will be made.

'P' FLAG: 4 minutes before the start either the Preparatory Flag, the 'I' Flag [Round-an-End Rule - RRS 30.1], the 'Z' Flag [Scoring Penalty], the 'Z' with 'I', or Black flag will be raised and a sound signal made.

The penalty for breach of the 'Z' flag shall be 3 places. [RRS 30.2 and RRS 44.3.(c)]



P



I




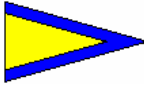
Z



1 minute before the start the Preparatory flag will be lowered with one long sound signal. The penalty period will now be in operation.

At the start the class flag will be lowered and a sound signal will be made.
Times shall be taken from the visual signals; the absence of a sound signal shall be disregarded.

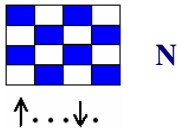
10.3 Late Starting - A boat shall not start later than 5 minutes after her starting signal.

10.4 Recalls RRS 29 - RRS 29.1 and 29.2 individual  and general  recalls will apply.

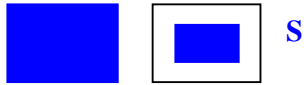
The committee boat MAY announce individual and general recalls on VHF channel 14.
Failure to transmit/receive recalls by VHF shall not be grounds for protest.

After a general recall the 5 minute starting sequence shall be repeated. The race will be restarted as soon as possible and competitors are warned not to delay in returning to the starting area. Subsequent starts will be postponed.

10.5 ABANDONMENT RRS 32.1 - All races that have started are ABANDONED. Return to the starting area. The WARNING SIGNAL will be made one minute after removal unless at that time the race is again abandoned or postponed.



10.6 SHORTENING COURSE RRS 32.2 - Courses may be shortened by the Race Officer. Shortening of course will be signalled at the new finishing mark by a boat vessel displaying a blue flag, ICF flag 'S' and THE RELEVANT CLASS FLAG accompanied by two sound signals.



10.7 CHANGE OF COURSE RRS 33 - Courses may be changed after the start by the Race Officer. When a change of course is signalled the bearing to the new mark will be displayed on a black/whiteboard on the signal boat.



10.8 FINISHING LINE - The finishing line will be between a red and white pole on the finish boat and an adjacent mark.

The finish boat is a mark of the course at the finish of the race.



11. PENALTIES

11.1 RRS 31.2 will apply (360 turn for touching a mark)

11.2 Penalty for breaking a rule of Part 2, RRS 44.3 (Scoring penalty) will apply. Boats should note their obligation to fly a yellow flag under this rule.



12. SCORING AND DISCARDS

The scoring system shall be the Low Point System in accordance with RRS Appendix A with the following modifications:

12.1 1st = 0.75 point.

12.2 2nd and subsequent placed boats shall score points equal to their placing.

12.3 OCS, RAF, DSQ and DNS = 1 point plus number of starters for the race.

12.4 DNC = 2 points plus number of entries for the Class.

12.5 For all classes if 6 races are sailed there will be 1 discard.

12.6 NORA CHAMPIONSHIPS will constitute all races completed by end of racing on Friday 20th June. If 4 or more races are completed there will be one discard.

13. TIME LIMITS

13.1 Where Laid courses or short Round the Cans courses are sailed the time limit shall be 45 minutes from the time the first boat in class finishes.

13.2 Where a Long Round the Cans course or Coastal course is sailed the time limit shall be 17.00 hrs but if the first boat finishes within the time limit, remaining boats shall have a further 80 minutes, from the finishing time of the first boat, to finish. This amends RRS 35.

13.3 Whether a course is a Long or Short Round the Cans the appropriate time limit will be announced on VHF Channel 14.

13.4 Competitors who retire should notify the Race Officer before leaving the race area.

14 NOTIFICATION OF TAKING ALTERNATIVE PENALTIES AND INTENTION TO PROTEST

14.1 Competitors are reminded of the requirement under RRS 44.3 to notify the committee boat of having taken an alternative penalty before leaving the finish area.

14.2 In addition to the requirements under RRS 61 boats must draw the attention of the FINISH Boat to an intention to protest before leaving the finish area.

15 PROTESTS

15.1 All protests shall be lodged only on official Protest Forms, which will be available at Clifden Boat Club.

15.2 Protests shall be lodged at the Race Office as soon as possible and in any case not later than 90 minutes after the protesting boat finishes its last race of the day unless the Protest Committee has reason to extend this time.

15.3 It is the responsibility of the PROTESTOR to inform the PROTESTEE of the lodging of the protest, the likely time and place of the hearing and to supply him with a copy thereof. It is the responsibility of all parties thereafter to attend at the time and place of any hearing with all necessary witnesses.

16 DISCLAIMER OF LIABILITY

16.1 The safety of a boat and her crew is the sole and inescapable responsibility of the owner(s) or the owner's representative whose obligation it is to ensure that the boat is fully found, seaworthy, manned by an experienced crew and equipped with all the necessary safety gear. Neither these Sailing Instructions nor any action of the organizing authority in any way limits or reduces the complete and unlimited responsibility of the owner(s) or owner's representative.

16.2 Attention is drawn to RRS Part 1.

16.3 Boat owners and competing crews undertake that they are adequately insured against loss, damage or injury to persons, boats or equipment at all times and however occurring and shall maintain adequate third party insurance cover.

16.4 No responsibility will be accepted by West of Ireland offshore Racing Association, Northwest Offshore Racing Association or Clifden Boat Club their members, servants or agents, nor those officials or members connected with the event for any loss, damage, injury or other claim of whatever nature howsoever arising or caused in connection with participation in, or intended participation in, this event.

17 LOCAL RULES

17.1 Skippers brief on the first day will be 9.30am at Clifden Boat Club.

17.2 Club Rule: All persons going afloat MUST wear a PFD (lifejacket or Buoyancy aid)

17.3 All competitors must make themselves available for protest.

17.4 Skippers are asked to ensure that boats not racing KEEP clear of boats that are racing at all times.

17.5 Please note the position and depth of the sand bar in the bay (highlighted on the chart)

17.6 Taxis to the yachts will be provided but in order to avoid the rush in the mornings please bring your own tender if you have one.

17.7 Water taxis will be available until 9pm each evening unless otherwise stated.

17.8 Water taxis will be operating on VHF channel 12

17.9 Early evening entertainment will be in the Club from end of racing until after the prize giving.

17.10 Late night entertainment will be provided in one of the 7 venues in the town. See the event publication.

17.11 Shore master for the event will be Bobbi O Regan contactable on VHF channel 12